

Diamond Cup Grinders

The layout of the segments determines the degree of grind. More segments gives a finer grinder, more evenly. Fewer segments gives a more rapid, coarser grind.

Segments are available in a variety of hardnesses for different substrates.

Check carefully with data or consult Nuplex for your particular application



The preparation of concrete is an essential processes for many of Nuplex's commercial flooring systems to function properly. Abrasion is required for both adhesion of products as well as providing a flat, even and level base.

The appearance of many flooring products is ultimately determined by the quality of the concrete substrate they have been applied to.

The systems shown here give various cost options to all users of flooring products.



Floor Pro E1 Junior 12" plate



COMMERCIAL FLOORING SYSTEMS

Nuplex Construction Products

PO Box 12-841
719 Great South Rd
Penrose

Phone: 0508-882288
Fax: 0508-553344
Email: ncpsales@nuplex.co.nz
[Wwww.nuplexconstruction.co.nz](http://www.nuplexconstruction.co.nz)

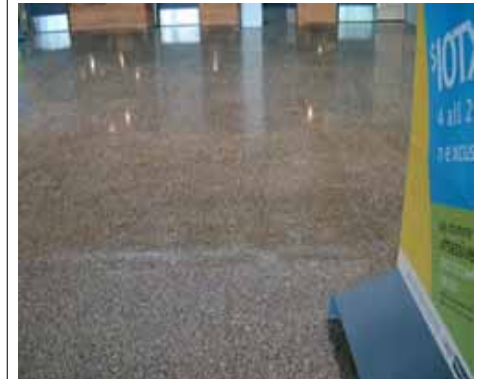
Construction
Products that Work.

Floor Grinding



May 2005

HTC420



Exposed aggregate concrete , diamond ground and polished.
Sealed with Nuplex Revathane non-yellowing polyurethane



Grinder Packs

Grinder information: The use of diamond grinders is now very common in NZ to prepare concrete for coatings and toppings, smooth concrete or to expose the aggregates for clear coatings such as Revathane.

Basic range

Option 1: GSP5 grinder pack \$750.00.
Optimal general purpose pack (see various other packs opposite)

Option 2: GSP5 grinder pack + Makita447L vaccum (recommended)
\$2145.00

Option 3: Floor pro E1 Junior + Ghibli WS3 (wet / dry) vaccum (better) \$4145.00

Option 4: Floor pro E1 Junior + Ermator S12 (dry) vaccum (best) \$ 6445.00

Option 5: Professional HTC 420 plus Ermator S12 vaccum system

When considering these options, it is best to plan ahead for a long term machine.

Options 1 and 2 are "on-the-knees", slower systems.

Option 3 vaccum will require careful maintenance as it has low capacity.

Option 1, without vaccum, will produce clouds of dust so is only suitable outside or for wet grinding.

Option 1- 4 will grind/ roughen floors at different rates per hour

Option 5 will grind at very high rates plus the option of polishing by changing pads

Full grinder pack range

The list of Holer packs are: (no vaccum inc.)

- GSP1 \$425.00, Makita 9526 ,100mmDR BS
- GSP2 \$595.00 Makita 9565, 125mmDR BS
- GSP3 \$595.00 Makita 9059, 180mm SR BS
- GSP4 \$650.00 Makita 9059, 180mm DR BS
- GSP5 \$750.00 Makita 9059, 180mm DR40
- GSP6 \$995.00 Makita 9059, 5 x180mm SR BS
- GSP7 \$1195.00 Makita 9059, 5 x 180mm , DR BS
- GSP8 \$1595.00 Makita 9059, 5x 180mm, DR40



Option 2



Ground, polished and polyurethaned concrete

Commercial floor grinding & polishing

The largest and most versatile floor grinder / polisher is the HTC420:

Prices: HTC420 \$ 8595.00 , The vaccum (dry Ermator S12 \$3295.00) Is the most compatible vac unit with this grinder.



Option 5



Nuplex Construction Products

PO Box 12-841
719 Great South Rd
Penrose

Phone: 0508-882288
Fax: 0508-553344
Email: ncpsales@nuplex.co.nz
Wwww.nuplexconstruction.co.nz